

MiniMax

Minimum Size, Maximum Value



FULL ELECTRIC PALLET TRUCK 1500kg

MiniMax-11 ET15E2

SIMPLE, RELIABLE



Powerful Driving Motor & PG Controller

Reliable Hydraulic System, Low Working Current, Easy maintenance
Electronic Brake

PG Controller from U.K

Intelligent Error Codes Flashing

0.75KW DC Motor, Powerful Performance

Driving Performance:

Grade ability	Loading capacity
9%	1500kg
8%	1500kg
5%	1500kg

Min. 2 hours Fasting Charging Optional Built-in Charger

ET15E2 is standard with BA charger, fast charging.

For different applications, external and internal charger designs are both available.



Replaceable Lithium Iron Battery

20/25Ah Capacity, 140 min Non-stop Running

5 Kgs Weight Only

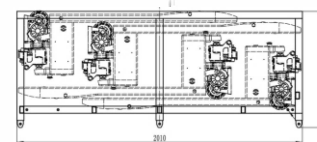
No Memory Effect, Long Life Time

5 Seconds to Replace Battery

2 years warranty

Compact Structure for More Applications

Compact structure makes the service quite effortless.
Thanks to small turning radius makes it suitable for all the applications of hand pallet truck.



Package

20GP: Max. 120 pcs, extremely low transportation cost



Self weight 130KG



Functional Handle

Emergency Reverse Button

Driving and Reversing Control

Battery Indicator

Horn

Lifting Button and Lowering Leveler

UP-Right Driving



Options



Optional to equip Scale,
1% accuracy

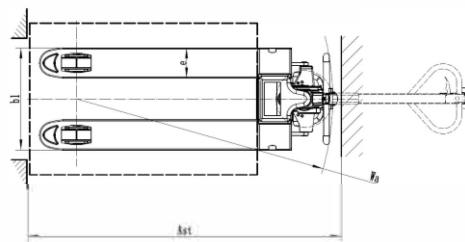
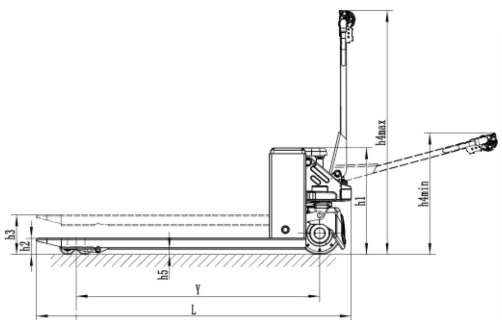


Optional Galvanized Frame



Optional Releasable Brake
To use it exactly like hand pallet truck for special applications

Dimensions



J8, Specification

Feature			
1.1	Model		ET15E
1.2	Drive unit		Electric
1.3	Operator type		Walkie
1.4	Rated capacity	kg	1500
1.5	Load center	mm	600
1.6	Wheel base	mm	1202
Weight			
2.1	Service weight (include battery)	kg	130/140
2.2	Battery weight	kg	6
Wheels			
3.1	Wheel type		PU
3.2	Size of driving wheels (diameter* width)	mm	210*70
3.3	Size of loading wheels (diameter* width)	mm	80*60/74*88
Dimensions			
4.1	Lift height	mm	200
4.2	Handle height in driving position Min./Max.	mm	750/1170
4.3	Lowered height	mm	75/85
4.4	Overall length	mm	1546/1616
4.5	Overall width	mm	540/685
4.6	Fork dimensions	mm	54*160*1150/1220
4.7	Width across forks	mm	550/685
4.8	Ground clearance, center of wheel base	mm	35
4.9	Aisle width for pallets 1000*1200mm pallet	mm	1950
4.10	Aisle width for pallets 800*1200 pallet	mm	1750
4.11	Turning radius	mm	1340/1410
Performance			
5.1	Travel speed, laden / unladen	km/h	4/4.5
5.2	Max. gradeability	%	6/15
5.3	Service brake type		Electromagnetic Regenerative
Motor and Battery			
6.1	Driving motor rating S2 60mm	kw	0.75
6.2	Lifting motor	kw	0.45
6.3	The maximum battery size	mm	170*85*215
6.4	Battery voltage	V/Ah	24/20-25
Additional data			
7.1	Sound measure at driver's ear	dB	68
7.2	Controller		PG(U.K)