



HABILEAD® tires



HABILEAD PASSENGER
CAR TIRE PRODUCT CATALOG

SORT	RFT / UHP	UHP	H/P-A/S
	HF330	S2000	H202
PATTERN			
PERFORMANCE	   	   	   

SORT	H/P	H/T	4 SEASON
	S801	RS27	A4
PATTERN			
PERFORMANCE	   	   	   

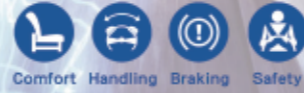
SORT	H/P	Drifting	H/T
	H206	S3000	RS21
PATTERN			
PERFORMANCE	   	   	   

SORT	H/P	A/T	M/T
	RS26	RS23	RS25
PATTERN			
PERFORMANCE	   	   	   

SORT	VAN/LTR/TAXI	S/T	WINTER
	RS01	RS03	AW11
PATTERN			
PERFORMANCE	   	   	   

SORT	WINTER	WINTER	WINTER
	AW33	RW506	RW505
PATTERN			
PERFORMANCE	   	   	   

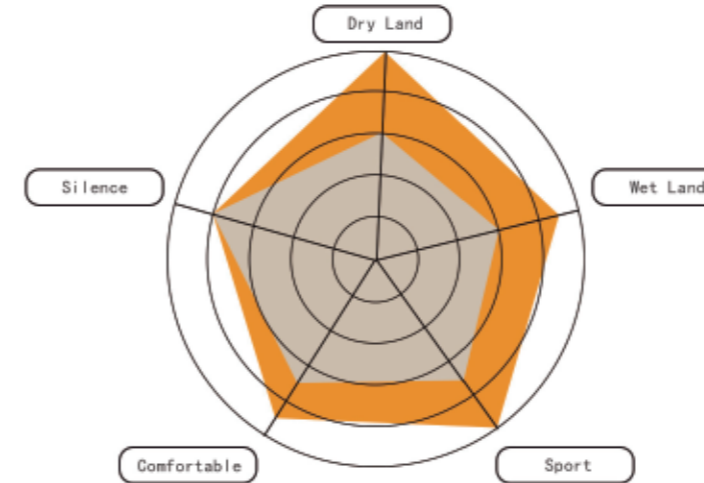
RFT
RUN FLAT TECHNOLOGY



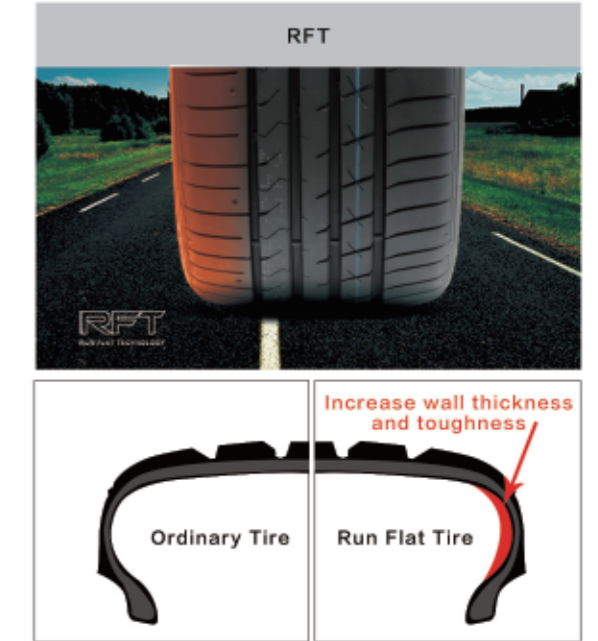
HABILEAD®

HABILEAD TIRE · PURSUE PERFECTION · ENJOY DRIVING

PERFORMANCE TESTING

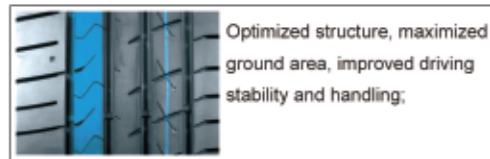


Run Flat Technology (RFT)

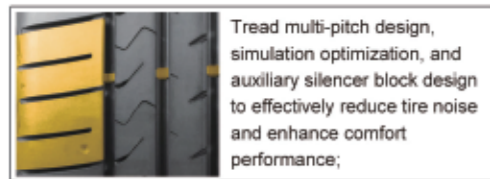


HF330
16/17/18/19/20/21

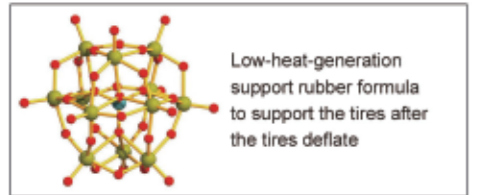
HF330 is a veritable super high-performance tire. The excellent handling is its label. The pattern and structure are optimized to improve comfortable. At the same time, The technology of RFT is used to ensure driving safety and make travel more safe and environmentally friendly.



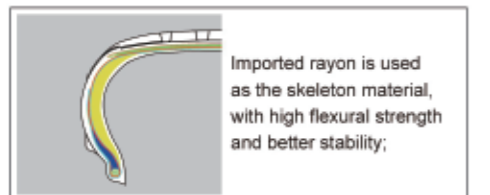
Optimized structure, maximized ground area, improved driving stability and handling;



Tread multi-pitch design, simulation optimization, and auxiliary silencer block design to effectively reduce tire noise and enhance comfort performance;



Low-heat-generation support rubber formula to support the tires after the tires deflate



Imported rayon is used as the skeleton material, with high flexural strength and better stability;



HF330 RFT

SIZE	LI/SS	XL	STANDARD	MAX	MAX	OUTER	SECTION	REMARKS
			RM	LOAD	PRESS	DIAMETER	WIDTH	
			inch	kg	kPa	mm	mm	
195 / 55	RF 16	91V	XL 6.0	615	340	620	201	
205 / 55	ZRF 16	94W	XL 6.5	670	340	632	214	
205 / 45	ZRF 17	88W	XL 7.0	560	340	616	206	
225 / 45	ZRF 17	94W	XL 7.5	670	340	634	225	
225 / 50	ZRF 17	98W	XL 7.0	750	340	658	233	
225 / 55	ZRF 17	101W	XL 7.0	825	340	680	233	
225 / 40	ZRF 18	92W	XL 8.0	630	340	637	230	
225 / 45	ZRF 18	95W	XL 7.5	690	340	659	225	
225 / 50	ZRF 18	99W	XL 7.0	775	340	683	233	
245 / 40	ZRF 18	97W	XL 8.5	730	340	653	248	
245 / 45	ZRF 18	100W	XL 8.0	800	340	677	243	
245 / 50	ZRF 18	104W	XL 7.5	900	340	703	253	
255 / 35	ZRF 18	94Y	XL 9.0	670	340	635	260	
255 / 40	ZRF 18	99Y	XL 9.0	775	340	661	260	
255 / 45	ZRF 18	103W	XL 8.5	875	340	687	255	
255 / 55	ZRF 18	109W	XL 8.0	1030	340	737	265	
235 / 45	ZRF 19	99Y	XL 8.0	775	340	695	236	
235 / 50	ZRF 19	103W	XL 7.5	875	340	719	245	
235 / 55	ZRF 19	105W	XL 7.5	925	340	741	245	
245 / 40	ZRF 19	98Y	XL 8.5	750	340	679	248	
245 / 45	ZRF 19	102Y	XL 8.0	850	340	703	243	
245 / 50	ZRF 19	105W	XL 7.5	925	340	729	253	
255 / 45	ZRF 19	104W	XL 8.5	900	340	713	255	
255 / 50	ZRF 19	107W	XL 8.0	975	340	739	265	
275 / 35	ZRF 19	100Y	XL 9.5	800	340	675	278	
275 / 40	ZRF 19	105W	XL 9.5	925	340	703	278	
245 / 40	ZRF 20	99Y	XL 8.5	775	340	704	248	
245 / 45	ZRF 20	103Y	XL 8.0	875	340	728	243	
275 / 40	ZRF 20	106W	XL 9.5	950	340	728	278	
315 / 35	ZRF 20	110Y	XL 11	1060	340	728	320	



Summer UHP



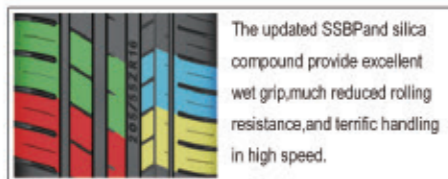
S2000

16/17/18/19/20

S2000 seeks exercise limit and extreme experience. The excellen high speed ability,handling in both dry and wet conditions,security and green design,make it to be preferred choice for luxury cars,Her stable performance is worthy of your trust.



Special asymmetrical design provides excellent grip and handling in both dry wet conditions.



The updated SSBP and silica compound provide excellent wet grip, much reduced rolling resistance, and terrific handling in high speed.



Sipes on outside shoulder enhance turning handling and low down noise in high speed.



The dramatic 2 central big grooves with special compound, enhances efficient water evacuation to deal with all conditions



S2000 Summer UHP

Size	LI&SS	/XL	Standard Rim	Max. Load	Max. Pressure	Overall Diameter	Section Width	Notes
195 / 45 R 16	84V	XL	6.5	500	340	582	195	
195 / 50 R 16	88V	XL	6.0	560	340	602	201	
195 / 55 R 16	91V	XL	6.0	615	340	620	201	
205 / 45 ZR 16	87W	XL	7.0	545	340	590	206	
205 / 50 ZR 16	91W	XL	6.5	615	340	612	214	
205 / 55 ZR 16			6.5	615	300	632	214	
205 / 55 ZR 16	94W	XL	6.5	670	340	632	214	
215 / 45 ZR 16	90W	XL	7.0	600	340	600	213	
215 / 55 ZR 16	97W	XL	7.0	730	340	642	226	
225 / 50 ZR 16	96W	XL	7.0	710	340	632	233	
225 / 55 ZR 16	99W	XL	7.0	775	340	654	233	
205 / 40 ZR 17	84W	XL	7.5	500	340	596	212	
205 / 45 ZR 17	88W	XL	7.0	560	340	616	206	
205 / 50 ZR 17	93Y	XL	6.5	650	340	638	214	
215 / 40 ZR 17	87W	XL	7.5	545	340	604	218	
215 / 45 ZR 17	91W	XL	7.0	615	340	626	213	
215 / 50 ZR 17	95W	XL	7.0	690	340	648	226	
215 / 55 ZR 17	98W	XL	7.0	750	340	668	226	
225 / 45 ZR 17	94W	XL	7.5	670	340	634	225	
225 / 50 ZR 17	98W	XL	7.0	750	340	658	233	
225 / 55 ZR 17	101W	XL	7.0	825	340	680	233	
235 / 45 ZR 17	97W	XL	8.0	730	340	644	236	
235 / 50 ZR 17	100W	XL	7.5	800	340	668	245	
235 / 55 ZR 17	103W	XL	7.5	875	340	690	245	
245 / 40 ZR 17	95W	XL	8.5	690	340	628	248	
245 / 45 ZR 17	99W	XL	8.0	775	340	652	243	
255 / 45 ZR 17	102Y	XL	8.5	850	340	662	255	
215 / 35 ZR 18	84Y	XL	7.5	500	340	607	218	
215 / 40 ZR 18	89Y	XL	7.5	580	340	629	218	
215 / 45 ZR 18	93W	XL	7.0	650	340	651	213	
225 / 40 ZR 18	92W	XL	8.0	630	340	637	230	
225 / 45 ZR 18	95W	XL	7.5	690	340	659	225	
235 / 40 ZR 18			8.5	690	340	645	241	
235 / 45 ZR 18	98W	XL	8.0	750	340	669	236	
235 / 50 ZR 18	101W	XL	7.5	825	340	693	245	
245 / 40 ZR 18	97W	XL	8.5	730	340	653	248	
245 / 45 ZR 18	100W	XL	8.0	800	340	677	243	
255 / 35 ZR 18	94Y	XL	9.0	670	340	635	260	
255 / 40 ZR 18	99Y	XL	9.0	775	340	661	260	
255 / 45 ZR 18	103W	XL	8.5	875	340	687	255	
265 / 35 ZR 18	97Y	XL	9.5	730	340	643	271	
225 / 35 ZR 19	88Y	XL	8.0	560	340	641	230	
235 / 35 ZR 19	91W	XL	8.5	615	340	647	241	
235 / 45 ZR 19	99Y	XL	8.0	775	340	695	236	
245 / 35 ZR 19	93W	XL	8.5	650	340	655	248	
245 / 40 ZR 19	98Y	XL	8.5	750	340	679	248	
245 / 45 ZR 19	102Y	XL	8.0	850	340	703	243	
255 / 35 ZR 19	96Y	XL	9.0	710	340	661	260	
225 / 35 ZR 20	90W	XL	8.0	600	340	666	230	
235 / 35 ZR 20	92W	XL	8.5	630	340	672	241	
245 / 35 ZR 20	95W	XL	8.5	690	340	680	248	
245 / 40 ZR 20	99Y	XL	8.5	775	340	704	248	
245 / 45 ZR 20	103Y	XL	8.0	875	340	728	243	
255 / 35 ZR 20	97W	XL	9.0	730	340	686	260	

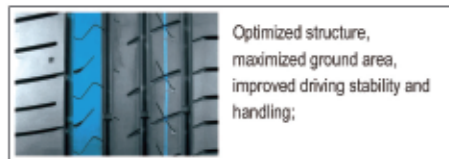


Summer UHP



HF330
16/17/18/19/20/21

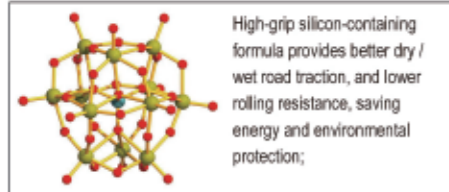
HF330 is a veritable super high-performance tire. The excellent handling is its label. The pattern and structure are optimized to improve comfortable. At the same time, The technology of RFT is used to ensure driving safety and make travel more safe and environmentally friendly.



Optimized structure, maximized ground area, improved driving stability and handling;



Tread multi-pitch design, simulation optimization, and auxiliary silencer block design to effectively reduce tire noise and enhance comfort performance;



High-grip silicon-containing formula provides better dry / wet road traction, and lower rolling resistance, saving energy and environmental protection;



The widened groove design improves drainage and prevents skidding when driving in rainy weather, improving safety.

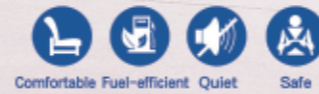


HF330 Summer UHP

SIZE	LI/SS	XL	STANDARD RIM	MAX LOAD	MAX PRESS	OUTER DIAMETER	SECTION WIDTH	REMARKS		
			inch	kg	kPa	mm	mm			
195 /	55 R	16	91V	XL	6.0	615	340	620	201	
205 /	55 ZR	16	94W	XL	6.5	670	340	632	214	
205 /	40 ZR	17	84W	XL	7.5	500	340	596	212	
205 /	45 ZR	17	88W	XL	7.0	560	340	616	206	
205 /	50 ZR	17	93W	XL	6.5	650	340	638	214	
215 /	40 ZR	17	87W	XL	7.5	545	340	604	218	
215 /	45 ZR	17	91W	XL	7.0	615	340	626	213	
215 /	50 ZR	17	95W	XL	7.0	690	340	648	226	
215 /	55 ZR	17	98W	XL	7.0	750	340	668	226	
225 /	45 ZR	17	94W	XL	7.5	670	340	634	225	
225 /	50 ZR	17	98W	XL	7.0	750	340	658	233	
225 /	55 ZR	17	101W	XL	7.0	825	340	680	233	
235 /	45 ZR	17	97W	XL	8.0	730	340	644	236	
235 /	50 ZR	17	100W	XL	7.5	800	340	668	245	
235 /	55 ZR	17	103W	XL	7.5	875	340	690	245	
245 /	40 ZR	17	95W	XL	8.5	690	340	628	248	
245 /	45 ZR	17	99W	XL	8.0	775	340	652	243	
255 /	45 ZR	17	102Y	XL	8.5	850	340	662	255	
215 /	40 ZR	18	89Y	XL	7.5	580	340	629	218	
215 /	45 ZR	18	93W	XL	7.0	650	340	651	213	
225 /	40 ZR	18	92W	XL	8.0	630	340	637	230	
225 /	45 ZR	18	95W	XL	7.5	690	340	659	225	
225 /	50 ZR	18	99W	XL	7.0	775	340	683	233	
235 /	40 ZR	18	95W	XL	8.5	690	340	645	241	
235 /	45 ZR	18	98W	XL	8.0	750	340	669	236	
235 /	50 ZR	18	101W	XL	7.5	825	340	693	245	
245 /	40 ZR	18	97W	XL	8.5	730	340	653	248	
245 /	45 ZR	18	100W	XL	8.0	800	340	677	243	
245 /	50 ZR	18	104W	XL	7.5	900	340	703	253	
255 /	35 ZR	18	94Y	XL	9.0	670	340	635	260	
255 /	40 ZR	18	99Y	XL	9.0	775	340	661	260	
255 /	45 ZR	18	103W	XL	8.5	875	340	687	255	
255 /	55 ZR	18	109W	XL	8.0	1030	340	737	265	
265 /	35 ZR	18	97Y	XL	9.5	730	340	643	271	
235 /	35 ZR	19	91W	XL	8.5	615	340	647	241	
235 /	45 ZR	19	99Y	XL	8.0	775	340	695	236	
235 /	50 ZR	19	103W	XL	7.5	875	340	719	245	
235 /	55 ZR	19	105W	XL	7.5	925	340	741	245	
245 /	35 ZR	19	93W	XL	8.5	650	340	655	248	
245 /	40 ZR	19	98Y	XL	8.5	750	340	679	248	
245 /	45 ZR	19	102Y	XL	8.0	850	340	703	243	
245 /	50 ZR	19	105W	XL	7.5	925	340	729	253	
255 /	35 ZR	19	96Y	XL	9.0	710	340	661	260	
255 /	45 ZR	19	104W	XL	8.5	900	340	713	255	
255 /	50 ZR	19	107W	XL	8.0	975	340	739	265	
275 /	35 ZR	19	100Y	XL	9.5	800	340	675	278	
275 /	40 ZR	19	105W	XL	9.5	925	340	703	278	
245 /	40 ZR	20	99Y	XL	8.5	775	340	704	248	
245 /	45 ZR	20	103Y	XL	8.0	875	340	728	243	
275 /	40 ZR	20	106W	XL	9.5	950	340	728	278	
315 /	35 ZR	20	110Y	XL	11.0	1060	340	728	320	
275 /	40 ZR	21	107Y	XL	9.5	975	340	753	278	
315 /	35 ZR	21	111Y	XL	11.0	1090	340	753	320	



ComfortMax AS



H202
12/13/14/15/17/18

H202 is specially designed for private car users. The reasonable pattern pitch arrangement and special block design make it have extraordinary silence and excellent wet and dry grip. Its silicon-containing special formula reduces the rolling resistance coefficient, which is more environmentally friendly and fuel efficient. The optimized structural design improves the comfort of the tires and allows you to enjoy a beautiful car life!

- Balanced comprehensive performance: silent, fuel-saving, safe and comfortable;
- Excellent fuel-saving ability of silicon-containing formula, economical and money-saving;
- Four seasons tire design;
- The special tread contour and optimized cross-sectional contour design improve the handling stability and the comfort of the tire.
- Optimized pattern pitch and sound absorption groove design of the shoulders bring excellent silent feeling to driving;



H202 ComfortMax AS

SIZE	L1/SS	XL	STANDARD RIM	MAX LOAD	MAX PRESS	OUTER DIAMETER	SECTION WIDTH	REMARKS
			inch	kg	kPa	mm	mm	
145 / 70 R 12	69T		4.5	325	300	509	150	
155 / 70 R 12	73T		4.5	365	300	523	157	
165 / 70 R 12	77T		5.0	412	300	537	170	
155 / 70 R 13	75T		4.5	387	300	548	157	
165 / 65 R 13	77T		5.0	412	300	544	170	
165 / 70 R 13	79T		5.0	437	300	562	170	
165 / 70 R 13	83T	XL	5.0	487	340	562	170	
175 / 70 R 13	82T		5.0	475	300	576	177	
185 / 70 R 13	86T		5.5	530	300	590	189	
155 / 65 R 14	75T		4.5	387	300	558	157	
165 / 60 R 14	75T		5.0	387	300	554	170	
165 / 65 R 14	79H		5.0	437	300	570	170	
165 / 70 R 14	81T		5.0	462	300	588	170	
175 / 65 R 14	86T	XL	5.0	530	300	584	177	
175 / 70 R 14	84H		5.0	500	300	602	177	
185 / 60 R 14	82H		5.5	475	300	578	189	
185 / 65 R 14	86H		5.5	530	300	596	189	
195 / 60 R 14	86H		6.0	530	300	590	201	
205 / 60 R 14	88H		6.0	560	300	602	209	
205 / 70 R 14	95H		6.0	690	300	644	209	
215 / 70 R 14	96H		6.5	710	300	658	221	
165 / 55 R 15	75H		5.0	387	300	563	170	
175 / 55 R 15	77H		5.5	412	300	573	182	
175 / 60 R 15	81H		5.0	462	300	591	177	
175 / 65 R 15	84H		5.0	500	300	609	177	
185 / 60 R 15	84H		5.5	500	300	603	189	
185 / 65 R 15	88H		5.5	560	300	621	189	
195 / 55 R 15	85V		6.0	515	300	595	201	
195 / 60 R 15	88V		6.0	560	300	615	201	
195 / 65 R 15	95H	XL	6.0	690	340	635	201	
205 / 60 R 15	91V		6.0	615	300	627	209	
205 / 65 R 15	94H		6.0	670	300	647	209	
215 / 60 R 15	94V		6.5	670	300	639	221	
215 / 65 R 15	96V		6.5	710	300	661	221	
195 / 60 R 16	89H		6.0	580	300	640	201	
205 / 45 R 16	87V	XL	6.0	545	340	590	206	
205 / 55 R 16	91V		6.5	615	300	632	214	
205 / 60 R 16	96H	XL	6.0	710	340	652	209	
205 / 65 R 16	95H		6.0	690	300	672	209	
215 / 60 R 16	99H	XL	6.5	775	340	664	221	
215 / 65 R 16	98H		6.5	750	300	686	221	
225 / 60 R 16	98H		6.5	750	300	676	228	
225 / 70 R 16	103T		6.5	875	300	722	228	
215 / 60 R 17	96H		6.5	710	300	690	221	
225 / 65 R 17	102H		6.5	850	300	724	228	
225 / 60 R 18	100H		6.5	800	300	727	228	

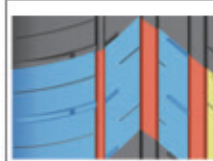


Summer H/P

S801

14/15/16/17

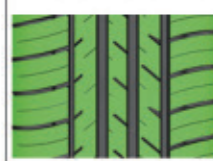
S801 is designed especially for successful people. The advanced asymmetrical tread design brings super silence, excellent grip in wet and dry conditions, handling, and uncommon driving experiences. The silica compound delivers reduced rolling resistance for better fuel efficiency. Sizes from 13" to 17" meet your different demand.



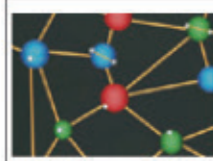
Balanced performance:
Stability, Silence,
Security, Mileage



Asymmetrical tread design
provides excellent grip and
handling.



Strong block tread design
improves mileage, stability,
and security.



Silica compound delivers
reduced rolling resistance for
better fuel efficiency.



HABILEAD®

HABILEAD TIRE · PURSUE PERFECTION · ENJOY DRIVING

S801 Summer H/P

Size					LI&SS	XL	Standard Rim	Max. Load	Max. Pressure	Overall Doameter	Section Width	Notes
							inch	kg	kPa	mm	mm	
165	/	60	R	14	75T		5.0	387	300	554	170	
165	/	70	R	14	81T		5.0	462	300	588	170	
175	/	65	R	14	82H		5.0	475	300	584	177	
175	/	70	R	14	84H		5.0	500	300	602	177	
185	/	60	R	14	82H		5.5	475	300	578	189	
185	/	65	R	14	86H		5.5	530	300	596	189	
185	/	70	R	14	88H		5.5	560	300	616	189	
195	/	60	R	14	86H		6.0	530	300	590	201	
195	/	70	R	14	91T		6.0	615	300	630	201	
195	/	70	R	14	91H		6.0	615	300	630	201	
195	/	70	R	14	95T	XL	6.0	690	340	630	201	
185	/	55	R	15	82V		6.0	475	300	585	194	
185	/	60	R	15	84H		5.5	500	300	603	189	
185	/	60	R	15	88H	XL	5.5	560	340	603	189	
185	/	65	R	15	88H		5.5	560	300	621	189	
185	/	65	R	15	92H	XL	5.5	630	340	621	189	
195	/	50	R	15	82V		6.0	475	300	577	201	
195	/	55	R	15	85V		6.0	515	300	595	201	
195	/	60	R	15	88V		6.0	560	300	615	201	
195	/	65	R	15	91V		6.0	615	300	635	201	
195	/	65	R	15	95H	XL	6.0	690	340	635	201	
205	/	65	R	15	94V		6.0	670	300	647	209	
215	/	65	R	15	96H		6.5	710	300	661	221	
215	/	65	R	15	100H	XL	6.5	800	340	661	221	
205	/	50	R	16	87V		6.5	545	300	612	214	
205	/	55	R	16	91V		6.5	615	300	632	214	
205	/	60	R	16	92V		6.0	630	300	652	209	
205	/	60	R	16	96H	XL	6.0	710	340	652	209	
215	/	60	R	16	95V		6.5	690	300	664	221	
215	/	60	R	16	99H	XL	6.5	775	340	664	221	
215	/	65	R	16	98H		6.5	750	300	686	221	
225	/	55	R	16	95V		7.0	690	300	654	233	
225	/	60	R	16	98H		6.5	750	300	676	228	
225	/	60	R	17	99H		6.5	775	300	702	228	
225	/	65	R	17	102H		6.5	850	300	724	228	

HABILEAD®



PracticalMax A/T



RS23

15/16/17/18/20

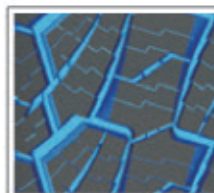
RS23 is a SUV tire suitable for all road conditions. While satisfying the performance of paved roads, it highlights the grip and sports performance of non-paved roads such as mountain roads, dirt roads and snow roads. The tiger-tooth pattern design provides powerful off-road performance for the car, and the use of a cut-resistant formula greatly improves the life of the tire pattern.



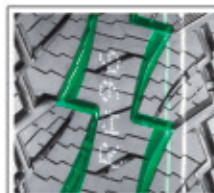
Tiger tooth-shaped three-dimensional block provides excellent grip performance on paved and non-paved roads;



The mixed pattern groove design guarantees the grip of mountain roads, mud and snow roads;



Special shoulder reinforcement design to prevent non-paved road from damaging the tires and bring you endless driving experience;



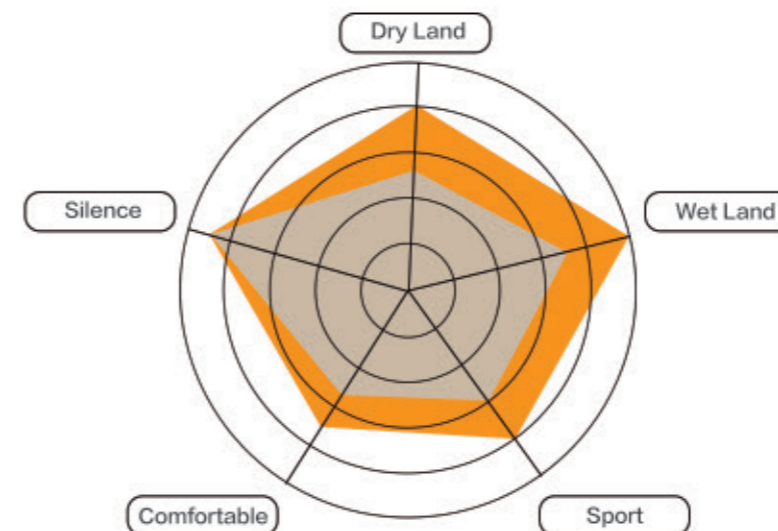
The irregular groove design guarantees the grip and strong off-road ability of non-paved roads;



HABILEAD®

HABILEAD TIRE · PURSUE PERFECTION · ENJOY DRIVING

PERFORMANCE TESTING



[Tire Shoulder Scratch Resistance Design] Improves puncture resistance and scratch resistance.



[Tread Convex White Letter Design] Make the tire appearance eye-catching, beautiful and fashionable

RS23 PracticalMax A/T

SIZE	L/SS	XL	STANDARD	MAX	MAX	OUTER	SECTION	REMARKS
			RM	LOAD	PRESS	DIAMETER	WIDTH	
			inch	kg	kPa	mm	mm	
215 / 70 R 16	100T		6.5	800	300	708	221	
225 / 70 R 16	103T		6.5	875	300	722	228	
235 / 70 R 16	106T		7.0	950	300	736	240	
245 / 70 R 16	111T	XL	7.0	1090	340	750	248	
255 / 70 R 16	111T		7.5	1090	300	764	260	
275 / 70 R 16	114T		8.0	1180	300	792	279	
245 / 70 R 17	110S		7.0	1060	300	776	248	
255 / 65 R 17	110T		7.5	1060	300	764	260	
265 / 65 R 17	112T		8.0	1120	300	776	272	
275 / 65 R 17	119S	XL	8.0	1360	340	790	279	
285 / 65 R 17	116S		8.5	1250	300	802	292	
265 / 60 R 18	110T		8.0	1060	300	775	272	
285 / 60 R 18	116H		8.5	1250	300	799	292	
285 / 50 R 20	116Q	XL	9.0	1250	340	794	297	
31 x 10.5 R 15	109S		8.5	1030	350	775	268	
215 / 75 R 15	100/97S		6.0	800/730	350	703	216	
225 / 75 R 15	102/99S		6.0	850/775	350	719	223	
235 / 75 R 15	104/101S		6.5	900/825	350	733	235	
215 / 85 R 16	115/112S		6.0	1215/1120	550	772	216	
225 / 75 R 16	115/112S		6.0	1215/1120	550	744	223	
235 / 70 R 16	110/107S		7.0	1060/975	450	736	240	
235 / 85 R 16	120/116S		6.5	1400/1250	550	806	235	
245 / 75 R 16	120/116S		7.0	1400/1250	550	774	248	
265 / 70 R 16	117/114T		8.0	1285/1180	450	778	272	
265 / 70 R 17	121/118S		8.0	1450/1320	550	804	272	
265 / 65 R 17	120/117S		8.0	1400/1285	550	776	272	
265 / 75 R 16	123/120S		7.5	1550/1400	550	804	267	
285 / 75 R 16	126/123S		8.0	1700/1550	550	834	286	



PracticalMax MT



RS25 15/16/17

RS25 is a special tire for off-road vehicles suitable for non-paved roads. It provides super driving force, grip, dirt road anti-skid performance, and excellent handling for off-road families. Its must-have for the off-road family in the worst of road conditions.



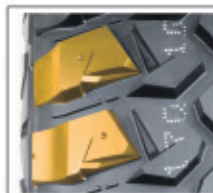
The optimized combination design of huge blocks and grooves provides excellent driving force, grip and anti-skid performance on non-paved roads;



Single winding hexagonal bead design, which greatly improves the durability stability of the tire bead.



The double-layer reinforced belt layer and the special specification three-layer reinforced carcass design greatly improve the overall strength of the tire and catch the requirements of the worst road conditions;



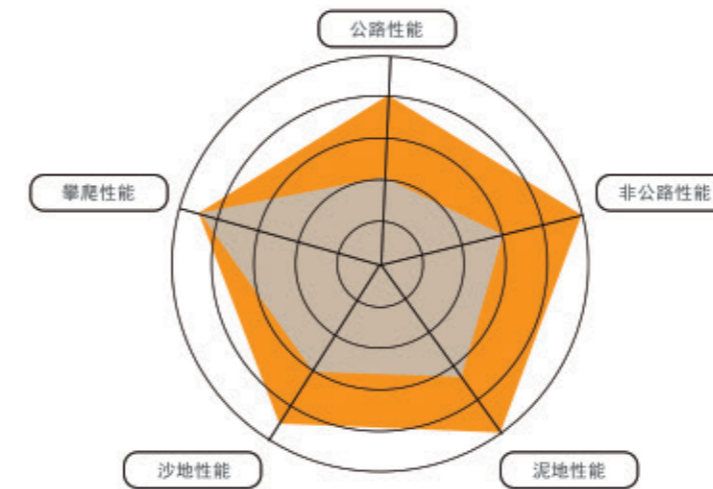
胎肩花纹沟特殊的保护坝设计以及粗犷的胎肩加强设计，提高胎肩抗撞击能力，因而极大的提高耐久性能；



HABILEAD®

HABILEAD TIRE · PURSUE PERFECTION · ENJOY DRIVING

PERFORMANCE TESTING



[Tread Convex White Letter Design] Make the tire appearance eye-catching, beautiful and fashionable



[Tire Shoulder Scratch Resistance Design] Improves puncture resistance and scratch resistance.

RS25 PracticalMax MT

SIZE				LI/SS	XL	STANDARD RIM	MAX LOAD	MAX PRESS	OUTER DIAMETER	SECTION WIDTH	REMARKS
						inch	kg	kPa	mm	mm	
31	x	10.5	R	15	109Q	8.5	1030	350	775	268	
235	/	85	R	16	120/116Q	6.5	1400/1250	550	806	235	
245	/	70	R	16	106/103Q	7.0	950/875	350	750	248	
245	/	75	R	16	120/116Q	7.0	1400/1250	550	774	248	
265	/	70	R	16	117/114Q	8.0	1285/1180	450	778	272	
245	/	65	R	17	111/108Q	7.0	1090/1000	450	750	248	
265	/	65	R	17	120/117Q	8.0	1400/1285	550	772	276	
265	/	70	R	17	121/118Q	8.0	1450/1320	550	804	272	
265	/	75	R	16	123/120Q	7.5	1550/1400	550	804	267	
285	/	75	R	16	126/123Q	8.0	1700/1550	550	834	286	



PracticalMax H/T



RS21

15/16/17/18

RS21 is specially designed for the king who constantly pursues sports extremes and enjoys the ultimate driving experience. With its excellent high-speed driving ability, excellent wet and dry road handling performance, and the introduction of safe, environmentally friendly design concepts, consistent and stable performance, it is worthy of your full trust!



The grooved step-like design prevents stones from being trapped when driving on country roads



Rigid and uniform block design, combined with the continuous central ribs, can improve the stability of the tire in straight running;



Decorative three-dimensional step design of shoulder, beautiful and heat dissipation.



The four main grooves cooperate with the horizontal grooves to provide excellent drainage performance and ensure the safety of driving in heavy rain.



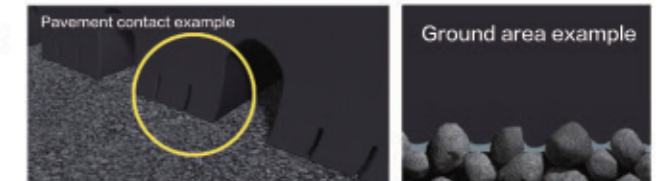
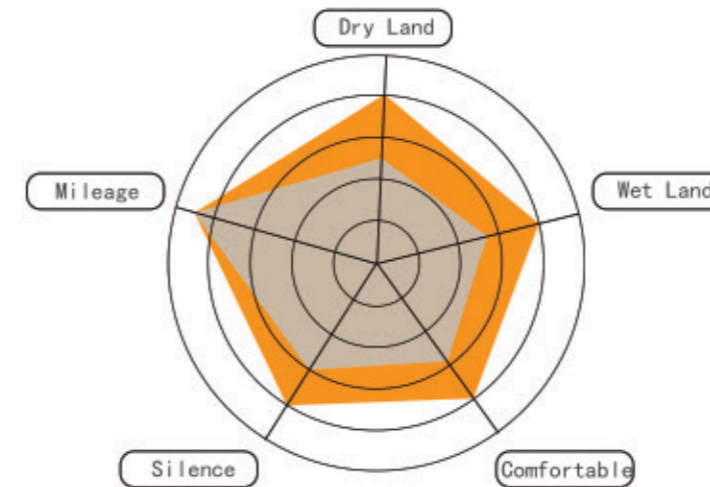
The design of curved fine grooves greatly reduces the water film between the road surface and the tire in rainy days, and prevents the occurrence of water sliding;



HABILEAD®

HABILEAD TIRE · PURSUE PERFECTION · ENJOY DRIVING

PERFORMANCE TESTING



The latest formula of polybutadiene and silicon-containing technology makes the grounding area more compact; effectively improves wetland performance, reduces rolling resistance, and provides excellent handling performance.

3D pattern groove design, optimized combination of shoulder pattern design, providing comfortable driving experience.

RS21 PracticalMax H/T

SIZE	LI/SS	XL	STANDARD RIM	MAX LOAD	MAX PRESS	OUTER DIAMETER	SECTION WIDTH	REMARKS
235 / 75 R 15	105H		6.5	925	300	733	235	
215 / 70 R 16	100H		6.5	800	300	708	221	
225 / 70 R 16	103H		6.5	875	300	722	228	
235 / 60 R 16	100H		7.0	800	300	688	240	
235 / 70 R 16	106H		7.0	950	300	736	240	
245 / 70 R 16	111H	XL	7.0	1090	340	750	248	
255 / 70 R 16	111H		7.5	1090	300	764	260	
265 / 70 R 16	112H		8.0	1120	300	778	272	
265 / 75 R 16	116H		7.5	1250	300	804	267	
275 / 70 R 16	114H		8.0	1180	300	792	279	
215 / 50 R 17	95H	XL	7.0	690	340	648	226	
215 / 65 R 17	99H		6.5	775	300	712	221	
225 / 60 R 17	99H		6.5	775	300	702	228	
225 / 65 R 17	102H		6.5	850	300	724	228	
235 / 55 R 17	99H		7.5	775	300	690	245	
235 / 60 R 17	106H	XL	7.0	950	340	714	240	
235 / 65 R 17	108H	XL	7.0	1000	340	738	240	
245 / 65 R 17	111H	XL	7.0	1090	340	750	248	
265 / 65 R 17	112H		8.0	1120	300	776	272	
265 / 70 R 17	115H		8.0	1215	300	804	272	
225 / 60 R 18	100H		6.5	800	300	727	228	
235 / 50 R 18	101H	XL	7.5	825	340	693	245	
235 / 55 R 18	104H	XL	7.5	900	340	715	245	
235 / 60 R 18	107H	XL	7.0	975	340	739	240	
255 / 55 R 18	109V	XL	8.0	1030	340	737	265	
265 / 60 R 18	114V	XL	8.0	1180	340	775	272	



PracticalMax H/P



RS26

17/18/19/20/21/22

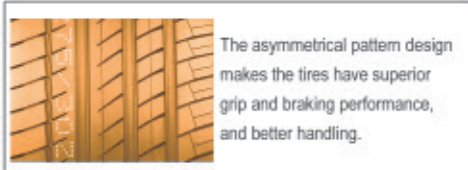
RS26 is a top-end luxury tire specially developed for SUVs, which enables your car to have sports car-like handling, high stability and luxury car-like comfort under a variety of road conditions.



Semi-closed groove design on both sides of the tread, lower noise;



Adopting the gradual groove depth design, the pattern block is strong; the stability of the shoulder can optimize the dry grip of the tire;



The asymmetrical pattern design makes the tires have superior grip and braking performance, and better handling.



The wide pattern groove design improves drainage performance and effectively avoids tire slippage on wet roads.



RS26 PracticalMax H/P

SIZE	LI/SS	XL	STANDARD RIM	MAX LOAD	MAX PRESS	OUTER DIAMETER	SECTION WIDTH	REMARKS
			inch	kg	kPa	mm	mm	
235 / 55 ZR 17	103W	XL	7.5	875	340	690	245	
235 / 65 R 17	108V	XL	7.0	1000	340	738	240	
215 / 55 R 18	99W	XL	7.0	775	340	693	226	
225 / 55 ZR 18	102W	XL	7.0	850	340	705	233	
235 / 50 ZR 18	101W	XL	7.5	825	340	693	245	
235 / 55 ZR 18	104W	XL	7.5	900	340	715	245	
255 / 55 R 18	109W	XL	8.0	1030	340	737	265	
255 / 60 R 18	112V	XL	7.5	1120	340	763	260	
225 / 45 R 19	96W	XL	7.5	710	340	685	225	
255 / 50 R 19	107W	XL	8.0	975	340	739	265	
255 / 55 R 19	111W	XL	8.0	1090	340	763	265	
275 / 30 ZR 19	96Y	XL	9.5	710	340	649	278	
275 / 35 ZR 19	100Y	XL	9.5	800	340	675	278	
285 / 45 R 19	111W	XL	9.5	1090	340	739	285	
235 / 45 ZR 20	100W	XL	8.0	800	340	720	236	
245 / 35 ZR 20	95W	XL	8.5	690	340	680	248	
245 / 40 ZR 20	99Y	XL	8.5	775	340	704	248	
245 / 45 ZR 20	103Y	XL	8.0	875	340	728	243	
245 / 50 ZR 20	102Y		7.5	850	300	754	253	
255 / 35 ZR 20	97W	XL	9.0	730	340	686	260	
255 / 40 ZR 20	101Y	XL	9.0	825	340	712	260	
255 / 45 ZR 20	105W	XL	8.5	925	340	738	255	
255 / 50 ZR 20	109W	XL	8.0	1030	340	764	265	
255 / 55 ZR 20	110W	XL	8.0	1060	340	788	265	
265 / 45 ZR 20	108Y	XL	9.0	1000	340	746	266	
265 / 50 R 20	111W	XL	8.5	1090	340	774	277	
275 / 30 ZR 20	97Y	XL	9.5	730	340	674	278	
275 / 35 ZR 20	102Y	XL	9.5	850	340	700	278	
275 / 40 R 20	106W	XL	9.5	950	340	728	278	
275 / 45 R 20	110W	XL	9.0	1060	340	756	273	
275 / 50 ZR 20	113W	XL	8.5	1150	340	784	284	
275 / 55 R 20	117W	XL	8.5	1285	340	810	284	
275 / 60 R 20	119V	XL	8.0	1360	340	838	279	
285 / 50 ZR 20	116W	XL	9.0	1250	340	794	297	
315 / 35 ZR 20	110Y	XL	11.0	1060	340	728	320	
265 / 40 ZR 21	105W	XL	9.5	925	340	745	271	
265 / 45 ZR 21	104W		9.0	900	300	771	266	
275 / 40 ZR 21	107Y	XL	9.5	975	340	753	278	
275 / 45 ZR 21	110W	XL	9.0	1060	340	781	273	
285 / 35 ZR 21	105Y	XL	10.0	925	340	733	290	
295 / 35 ZR 21	107Y	XL	10.5	975	340	739	301	
295 / 40 ZR 21	111Y	XL	10.5	1090	340	769	301	
325 / 30 ZR 21	108W	XL	11.5	1000	340	729	331	
275 / 40 ZR 22	107Y	XL	9.5	975	340	779	278	
285 / 35 ZR 22	106W	XL	10.0	950	340	759	290	
295 / 30 ZR 22	103W	XL	10.5	875	340	737	301	



SportMax



S3000
16/17/18

S3000 is a drift tyre that pursues high-speed driving control and enjoys endless fun of driving on the street and track.

Original formula structure
It adopts the new unique filler and the special tread formula of multi-functional materials to quickly reach the hot-melt temperature, soften the hardness of the tread, generate viscosity, provide great grip when driving and braking, and prevent sideslip when turning;

The specific formula design is applicable to comprehensive track, dry track and wet track respectively, with tread hardness of 45-88, providing excellent grip and low hardness wear resistance under various extreme conditions;

The cross support design makes the rigidity of the center tire shoulder most moderate distribution, improves the grounding when turning, and ensures the drainage performance;

The enhanced sidewall design can prevent the bulge or damage when the tire collides with the edge of the track. When the tire accelerates, brakes or turns at high speed, it can bear strong longitudinal tension and centrifugal force;

The tire adopts aramid, super strong steel wire and special sidewall rubber to improve tire rigidity, reduce tire roll when cornering and ensure good handling;



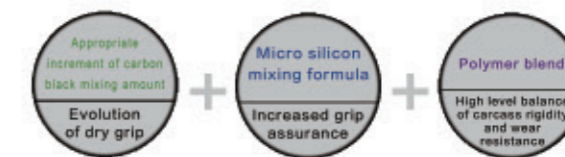
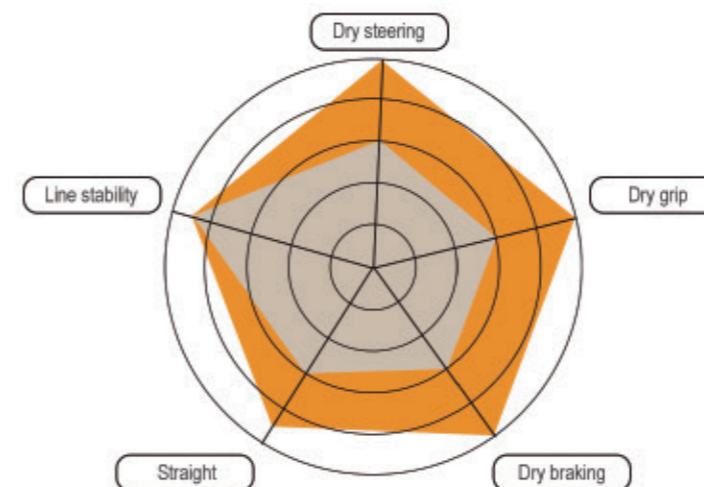
HABILEAD®

HABILEAD TIRE · PURSUE PERFECTION · ENJOY DRIVING

PERFORMANCE TESTING

SUPER GRIP

For the tread rubber of previous events, appropriate carbon black increment can enhance the dry grip Silicon element is added to ensure the grip of the wetland and enhance the adhesion with the road during driving, Get stronger grip, in addition, use polymer hybrid polymer to strengthen colloidal rigidity To ensure wear resistance.



AT HIGH SPEED
Avoid sticking too much dust, sand and stone to affect the tread friction, so as to ensure stable grip performance and reduce tire wear and fuel consumption.

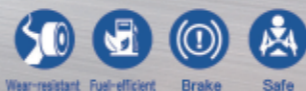


S3000 SportMax

SIZE				LVSS	XL	STANDARD RIM	MAX LOAD	MAX PRESS	OUTER DIAMETER	SECTION WIDTH	REMARKS	
						inch	kg	kPa	mm	mm		
235	/	40	R	18	95W	XL	8.5	690	340	645	241	
265	/	35	R	18	97W	XL	9.5	730	340	643	271	
255	/	35	ZR	18	94Y	XL	9.0	670	340	635	260	
225	/	40	ZR	18	92W	XL	8.0	630	340	637	230	
225	/	45	ZR	18	95W	XL	7.5	690	340	659	225	
215	/	45	ZR	17	91W	XL	7.0	615	340	626	213	
235	/	45	ZR	17	97W	XL	8.0	730	340	644	236	
205	/	55	ZR	16	94W	XL	6.5	670	340	632	214	



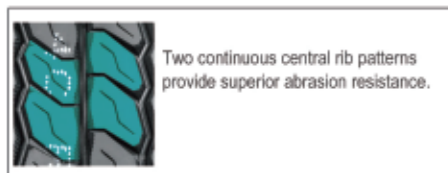
DurableMax



RS01

13/14/15/16

RS01 is designed for taxis. Adopt three grooves and large blocks design, especially the use of ultra-fine carbon black, which greatly improves the abrasion resistance and safety of the tire, reduces the rolling resistance of the tire, and improves operation for taxi drivers while ensuring safety income.



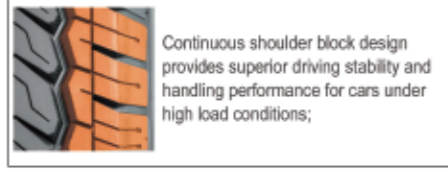
Two continuous central rib patterns provide superior abrasion resistance.



Special contour design to prevent tire wear.



The convex surface is designed to bulge outwards to provide superior traction and anti-skid performance for the tire;



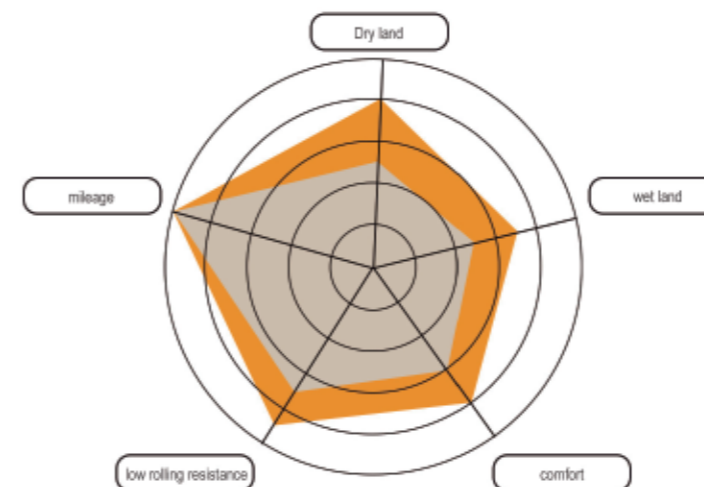
Continuous shoulder block design provides superior driving stability and handling performance for cars under high load conditions;



HABILEAD®

HABILEAD TIRE · PURSUE PERFECTION · ENJOY DRIVING

PERFORMANCE TESTING



ABRASION AND DURABILITY

[Uniform ground pressure design] Suppress shoulder deformation and shoulder wear

LONG SERVICE LIFE

Optimize the tread rubber formula to strengthen the tread strength and prevent the tread deformation in the later stage of use.

RS01 DurableMax

SIZE	LVSS	XL	STANDARD	MAX	MAX	OUTER	SECTION	REMARKS				
			RIM	LOAD	PRESS	DIAMETER	WIDTH					
			inch	kg	kPa	mm	mm					
165			R 13	LT	94/93R		4.5	670/650	450	594	165	
165	/	70	R 13	C	88/86R		5.0	560/530	375	562	170	
165	/	70	R 13	LT	88/86R		5.0	560/530	375	562	170	
175	/	70	R 14	LT	95/93R		5.0	690/650	375	602	177	
175	/	65	R 14	C	90/88T		5.0	600/560	375	584	177	
175	/	65	R 14	LT	90/88T		5.0	600/560	375	584	177	
185			R 14	C	102/100R		5.5	850/800	450	650	188	
185			R 14	LT	102/100R		5.5	850/800	450	650	188	
195			R 14	LT	105/103R		5.5	925/875	450	666	198	
195			R 15	C	106/104R		5.5	950/900	450	693	196	
195			R 15	LT	106/104R		5.5	950/900	450	693	196	
195	/	70	R 15	LT	99/96R		6.0	775/710	450	655	201	
205	/	65	R 15	LT	102/100T		6.0	800/730	450	647	209	
205	/	70	R 15	LT	106/104R		6.0	950/900	450	669	209	
215	/	65	R 15	LT	104/102T		6.5	900/850	375	661	221	
215	/	70	R 15	LT	104/101R		6.5	900/825	450	683	221	
225	/	70	R 15	LT	106/103R		6.5	950/875	450	697	228	
185	/	75	R 16	LT	100/97R		5.0	800/730	450	684	184	
195	/	65	R 16	LT	99/96R		6.0	775/710	450	660	201	
195	/	75	R 16	LT	102/99R		5.5	850/775	450	698	196	
205	/	65	R 16	LT	101/98R		6.0	825/750	450	672	209	
205	/	75	R 16	LT	113/111R		5.5	1150/1090	525	714	203	
215	/	65	R 16	LT	109/107R		6.5	1030/975	475	686	221	
215	/	75	R 16	LT	112/109R		6.0	1120/1030	525	728	216	
225	/	65	R 16	LT	112/110R		6.5	1120/1060	475	698	228	
235	/	65	R 16	LT	115/113R		7.0	1215/1150	475	712	240	
195			R 14	LT	105/103R		5.5	925/875	450	666	198	



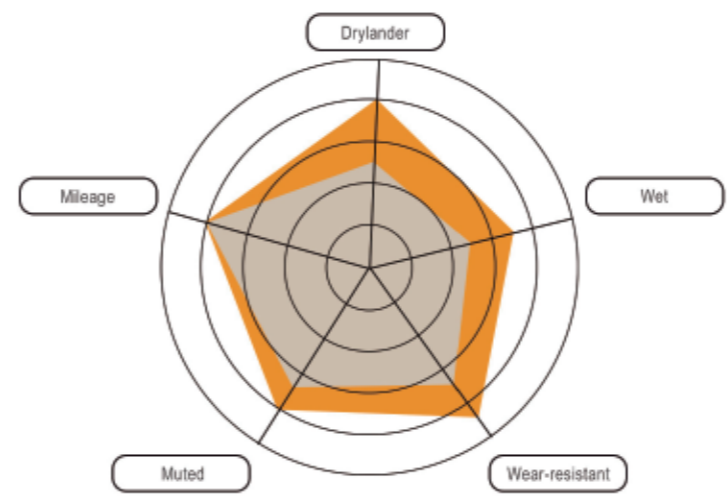
PracticalMax



HABILEAD®

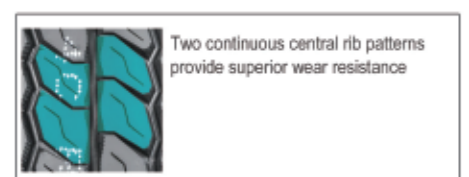
HABILEAD TIRE · PURSUE PERFECTION · ENJOY DRIVING

PERFORMANCE TESTING



RS01
13/14/15/16

RS01 is a light truck tire for business use, which can meet the overweight test under various extremely harsh conditions. It is specially designed to improve the business operation income



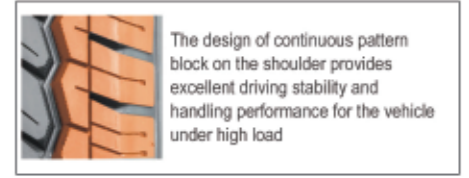
Two continuous central rib patterns provide superior wear resistance



Special contour design to prevent tire eccentric wear



The design of convex surface protruding out of tread pattern block provides superior traction performance and anti sideslip performance for tire



The design of continuous pattern block on the shoulder provides excellent driving stability and handling performance for the vehicle under high load



RS01 PracticalMax

SIZE	LVSS	XL	STANDARD	MAX	MAX	OUTER	SECTION	REMARKS
			RIM	LOAD	PRESS	DIAMETER	WIDTH	
			inch	kg	kPa	mm	mm	
165			4.5	670/650	450	594	165	
165 / 70	R 13 C		5.0	560/530	375	562	170	
165 / 70	R 13 LT		5.0	560/530	375	562	170	
175 / 70	R 14 LT		5.0	690/650	375	602	177	
175 / 65	R 14 C		5.0	600/560	375	584	177	
175 / 65	R 14 LT		5.0	600/560	375	584	177	
185	R 14 C		5.5	850/800	450	650	188	
185	R 14 LT		5.5	850/800	450	650	188	
195	R 14 LT		5.5	925/875	450	666	198	
195	R 15 C		5.5	950/900	450	693	196	
195	R 15 LT		5.5	950/900	450	693	196	
195 / 70	R 15 LT		6.0	775/710	450	655	201	
205 / 65	R 15 LT		6.0	800/730	450	647	209	
205 / 70	R 15 LT		6.0	950/900	450	669	209	
215 / 65	R 15 LT		6.5	900/850	375	661	221	
215 / 70	R 15 LT		6.5	900/825	450	683	221	
225 / 70	R 15 LT		6.5	950/875	450	697	228	
185 / 75	R 16 LT		5.0	800/730	450	684	184	
195 / 65	R 16 LT		6.0	775/710	450	660	201	
195 / 75	R 16 LT		5.5	850/775	450	698	196	
205 / 65	R 16 LT		6.0	825/750	450	672	209	
205 / 75	R 16 LT		5.5	1150/1090	525	714	203	
215 / 65	R 16 LT		6.5	1030/975	475	686	221	
215 / 75	R 16 LT		6.0	1120/1030	525	728	216	
225 / 65	R 16 LT		6.5	1120/1060	475	698	228	
235 / 65	R 16 LT		7.0	1215/1150	475	712	240	
195	R 14 LT		5.5	925/875	450	666	198	



Specialty Trailer



RS03

13/14/15/16

RS03 is designed especially for specialty trailer. The Z shape tread blocks provide excellent traction.

4 draining grooves bring excellent drainage.

Soft central blocks and hard Z shape blocks can meet all terrains.

Wider tread brings extra grips and traction.

Thick sidewall and special wearing compound bring long mileage.



RS03 Specialty Trailer

	Size					LI&SS	P.R	Standard Rim	Max. Load	Max. Pressure	Overall Diameter	Section Width	Notes
ST	175	/	80	R	13	91/87M	6C	5	615/545	350	610	177	
ST	205	/	75	R	14	100/96M	6C	5.5	800/710	350	664	203	
ST	215	/	75	R	14	102/98M	6C	6	850/750	350	678	216	
ST	205	/	75	R	15	101/97M	6C	5.5	825/730	350	689	203	
ST	205	/	75	R	15	107/102M	8D	5.5	975/850	450	689	203	
ST	225	/	75	R	15	113/108M	8D	6	1150/1000	450	719	223	
ST	225	/	75	R	15	117/112M	10E	6	1285/1120	550	719	223	
ST	235	/	80	R	16	124/120M	10E	6.5	1600/1410	590	782	235	
ST	235	/	85	R	16	125/121M	10E	6.5	1650/1450	550	806	235	
ST	235	/	85	R	16	128/124M	12F	6.5	1800/1600	660	806	235	





PracticalMax H/T



RS27

15/16/17/18

RS27 is a kind of SUV and pick-up truck tire with mixed pattern designed for unique climate and environment, which can adapt to all kinds of comprehensive road conditions

The horizontal coarse and fine grooves cooperate with the design of the longitudinal small grooves to maximize the sediment discharge and greatly improve the grip on the sediment ground

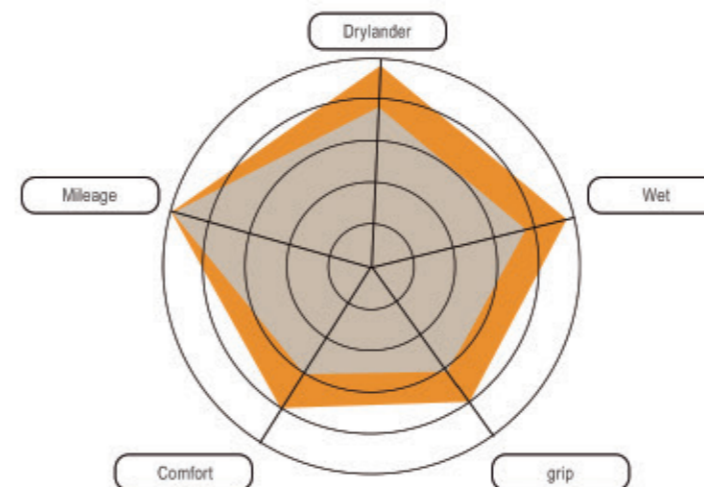
Four main zigzag grooves and transverse grooves provide excellent wet grip performance

The design of large three-dimensional decorative steps at the shoulder of the tire provides great heat dissipation capacity, and the tire can cope with the hot and dry climate

The high toughness and tear resistance formula is designed to ensure the performance of tyres in severe environment
Performance Testing

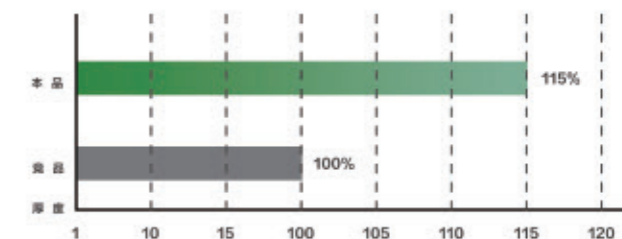


PERFORMANCE TESTING



THE DESIGN OF BASE GLUE THICKNESS STRENGTHENING

The thickness of the base rubber is strengthened to prevent the tread groove from cracking



RS27 PracticalMax H/T

SIZE		L/SS	XL	STANDARD RIM	MAX LOAD	MAX PRESS	OUTER DIAMETER	SECTION WIDTH	REMARKS
				inch	kg	kPa	mm	mm	
255	/	70	R 15 C	112/110S	7.5	1120/1060	375	739	260
205			R 16 C	110/108S	6.0	1110/1000	450	736	208
235	/	85	R 16	120/116S	6.5	1400/1250	550	806	235
265	/	65	R 17	112H	8.0	1120	300	776	272
285	/	65	R 17	116H	8.5	1250	300	802	292
285	/	60	R 18	116H	8.5	1250	300	799	292



TouringMax+ A/S



H201

15/16

H201 is a high-end touring tire with four seasons pattern. Its super long wearing performance has excellent dry and wet performance. With low heat formula, it can bring safety guarantee for long-distance travel. At the same time, the optimized tire section design greatly improves the driving comfort



Special contour design and formula design are adopted to ensure super long mileage



Seamless steel wire ring and crown strip ensure the uniformity of tire and improve the comfort



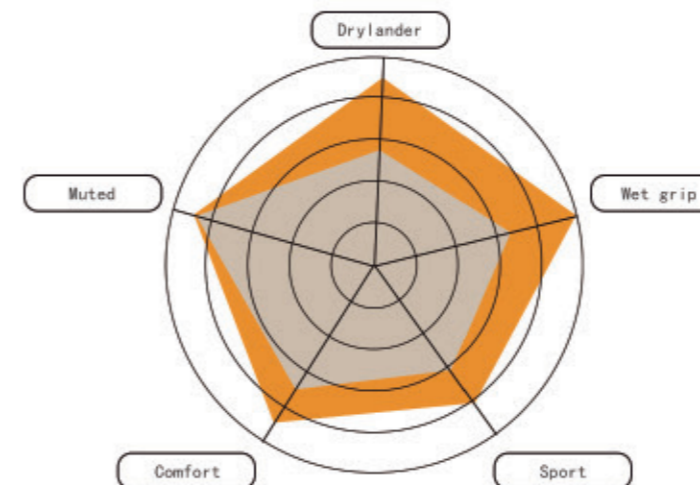
Multi slotted design to improve grip and reduce noise



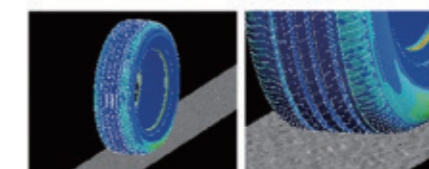
Four broad grooves provide good drainage performance



PERFORMANCE TESTING



The latest formula of solution polymerized styrene and silicon technology makes the grounding area closer; effectively improves wetland performance, reduces rolling resistance and provides excellent handling performance



Validation of bionic technology of road noise analysis of road noise caused by tire driving on rough road, adjustment of tire structure, reduction of road noise

H201 TouringMax+ A/S

SIZE		LI/SS	XL	STANDARD RIM	MAX LOAD	MAX PRESS	OUTER DIAMETER	SECTION WIDTH	REMARKS			
				inch	kg	kPa	mm	mm				
205	/	70	R	15	96T		6.0	710	300	669	209	
205	/	75	R	15	97T		5.5	730	300	689	203	
215	/	70	R	15	98T		6.5	750	300	683	221	
215	/	75	R	15	100T		6.0	800	300	703	216	
225	/	70	R	15	100T		6.5	800	300	697	228	
225	/	75	R	15	102T		6.0	850	300	719	223	
235	/	75	R	15	105T		6.5	925	300	733	235	
205	/	55	R	16	91T		6.5	615	300	632	214	



Summer HP

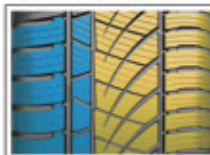


Comfortable Fuel-efficient Quiet Safe

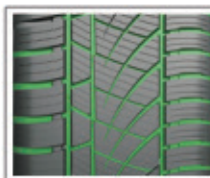
A4

13/14/15/16/17

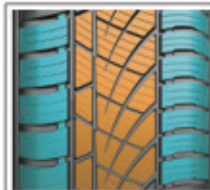
A4 special all Season product with marvelous overall performance.



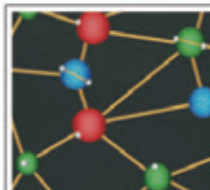
Special asymmetrical design provides excellent grip and handling in both dry wet conditions.



The updated SSBP and silica compound provide excellent wet grip, much reduced rolling resistance, and terrific handling in high speed.



Sipes on outside shoulder enhance turning handling and low down noise in high speed.



The dramatic central big grooves with special compound, enhances efficient water evacuation to deal with all conditions.



HABILEAD®

HABILEAD TIRE · PURSUE PERFECTION · ENJOY DRIVING

A4 Summer HP

Size				LI&SS		Standard Rim	Max. Load	Max. Pressure	Overall Diameter	Section Width	Notes	
												inch
225	/	45	R	17	94V	XL	7.5	670	340	634	225	
185	/	55	R	15	82H		6.0	530	300	585	194	
185	/	55	R	15	86H	XL	6.0	530	340	585	194	
195	/	55	R	15	85H		6.0	515	300	595	201	
195	/	55	R	16	87H		6.0	545	300	620	201	
205	/	55	R	16	91V		6.5	670	300	632	214	
205	/	55	R	16	94V	XL	6.5	670	340	632	214	
215	/	55	R	16	97V	XL	7.0	730	340	642	226	
185	/	60	R	14	82H		5.5	475	300	578	189	
185	/	60	R	15	88H	XL	5.5	560	340	603	189	
195	/	60	R	15	88H		6.0	560	300	615	201	
205	/	60	R	16	96H	XL	6.0	710	340	652	209	
155	/	65	R	14	75T		4.5	387	300	558	157	
165	/	65	R	14	79T		5.0	437	300	570	170	
175	/	65	R	14	82T		5.0	530	300	584	177	
175	/	65	R	14	86T	XL	5.0	530	340	584	177	
185	/	65	R	14	86T		5.5	530	300	596	189	
185	/	65	R	15	88H		5.5	560	300	621	189	
195	/	65	R	15	91H		6.0	690	300	635	201	
195	/	65	R	15	95H	XL	6.0	690	340	635	201	
165	/	70	R	13	79T		5.0	437	300	562	170	
165	/	70	R	14	81T		5.0	515	300	588	170	
165	/	70	R	14	85T	XL	5.0	515	340	588	170	
175	/	70	R	13	82T		5.0	475	300	576	177	
175	/	70	R	14	88T	XL	5.0	560	340	602	177	

HABILEAD®





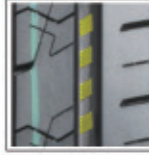


ComfortMax



H206

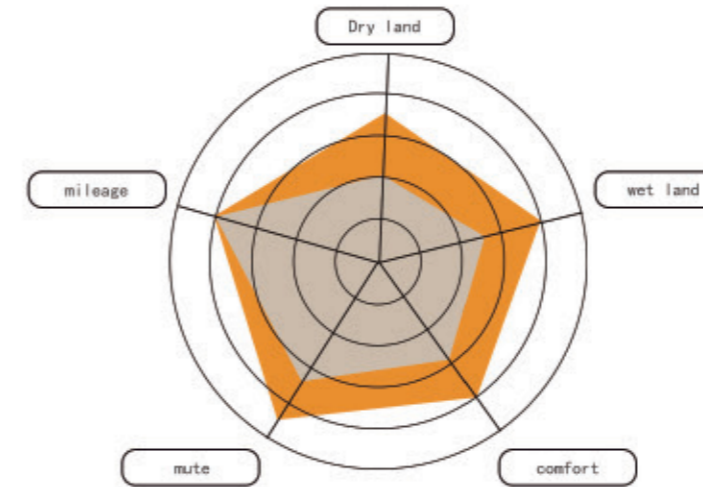
14/15

H206 is designed with noise reduction block + multi-pitch arrangement pattern, which reduces driving noise and improves comfort. It is a passenger car tire for private car owners with safety and comfort at the core.

-  Balanced comprehensive performance: silent, safe, comfortable and fuel efficient;
-  Optimized cross-section profile improves handling stability during driving;
-  Silencer block design, disturbs the high-speed air flow in the groove, reduces the noise caused by the pumping effect, and is more quiet and comfortable;
-  Variable pitch pattern design, combined with optimized pitch arrangement, can effectively reduce noise during driving and improve driving quality;
-  Lightweight tire design, the application of new materials such as ultra-high-strength steel wire and single wound bead wire, lightweight tire products, improving comfort and reducing roll resistance;



PERFORMANCE TESTING



The design of variable pattern pitch and quick noise elimination in the groove can effectively cut off the air flow and reduce noise; the use of silicon-containing formula makes the vehicle have excellent fuel-saving ability.

H206 ComfortMax

SIZE				LI/SS	XL	STANDARD RIM	MAX LOAD	MAX PRESS	OUTER DIAMETER	SECTION WIDTH	REMARKS
						inch	kg	kPa	mm	mm	
175	/	70	R	14	84H	5.0	500	300	602	177	
185	/	60	R	14	82H	5.5	475	300	578	189	
185	/	65	R	14	86H	5.5	530	300	596	189	
185	/	60	R	15	84H	5.5	500	300	603	189	
185	/	65	R	15	88H	5.5	560	300	621	189	
195	/	60	R	15	88V	6.0	560	300	615	201	
195	/	65	R	15	91V	6.0	615	300	635	201	
205	/	65	R	15	94V	6.0	670	300	647	209	



SnowShoes



Winter tire icy and snowy pavement Handling Driving performance

AW33

AW33 is a winter tire product specially designed for the ice and snow area, so that you can enjoy the driving pleasure on the ice and snow ground and the slippery road

13/14/15/16/17/18/19/20

Unsymmetrical tread tires maintain rigidity on the outside and provide more ground area, improve the grip of dry wetland and ice surface sharp turning

The 3D and ultra-thin groove design with fine tread improves the grip of ice and snow ground and ensures the handling and driving performance of ice and snow ground

More crosswise and multiple pattern grooves cross, which can fully absorb water, avoid water film, and effectively form snow pillars to improve snow discharge performance

The low temperature resistant compound formula of tread has strong grip on snow and ice, and can ensure excellent handling performance



AW33 SnowShoes

Size		L&SS		/XL	Standard Rim	Max. Load	Max. Pressure	Overall Diameter	Section Width	Notes		
inch	kg	mm	mm									
155	/	65	R	13	71T	4.5	365	300	532	157		
165	/	70	R	13	79T	5.0	437	300	562	170		
165	/	60	R	14	75T	5.0	387	300	554	170		
165	/	70	R	14	81T	5.0	462	300	588	170		
175	/	65	R	14	86T	XL	5.0	530	340	584	177	
175	/	70	R	14	88T	XL	5.0	560	340	602	177	
185	/	60	R	14	82T		5.5	475	300	578	189	
185	/	65	R	14	86T		5.5	530	300	596	189	
185	/	70	R	14	88T		5.5	560	300	616	189	
185	/	60	R	15	84H		5.5	500	300	603	189	
185	/	65	R	15	88H		5.5	560	300	621	189	
195	/	55	R	15	85H		6.0	515	300	595	201	
195	/	60	R	15	88H		6.0	560	300	615	201	
195	/	65	R	15	95T	XL	6.0	690	300	635	201	
205	/	65	R	15	94H		6.0	670	300	647	209	
195	/	60	R	16	89T		6.0	580	300	640	201	
205	/	55	R	16	91H		6.5	615	300	632	214	
205	/	60	R	16	96H	XL	6.0	710	340	652	209	
225	/	55	R	16	99H	XL	7.0	775	340	654	233	
215	/	60	R	16	99H	XL	6.5	775	340	664	221	
215	/	65	R	16	98H		6.5	750	300	686	221	
215	/	70	R	16	100T		6.5	800	300	708	221	
225	/	60	R	16	98T		6.5	750	300	676	228	
225	/	70	R	16	107T	XL	6.5	975	340	722	228	
235	/	60	R	16	100T		7.0	800	300	688	240	
235	/	70	R	16	106T		7.0	950	300	736	240	
245	/	70	R	16	107T		7.0	975	300	750	248	
265	/	70	R	16	112T		8.0	1120	300	778	272	
205	/	45	R	17	88H	XL	7.0	560	340	616	206	
205	/	50	R	17	93H	XL	6.5	650	340	638	214	
215	/	50	R	17	95H	XL	7.0	690	340	648	226	
215	/	55	R	17	94H		7.0	670	300	668	226	
215	/	60	R	17	96H		6.5	710	300	690	221	
225	/	45	R	17	94H	XL	7.5	670	340	634	225	
225	/	50	R	17	98H	XL	7.0	750	340	658	233	
225	/	55	R	17	101H	XL	7.0	825	340	680	233	
225	/	60	R	17	99H		6.5	775	300	702	228	
225	/	65	R	17	102T		6.5	850	300	724	228	
235	/	50	R	17	100H	XL	7.5	800	340	668	245	
235	/	55	R	17	103H	XL	7.5	875	340	690	245	
235	/	65	R	17	108T	XL	7.0	1000	340	738	240	
245	/	65	R	17	111H	XL	7.0	1090	340	750	248	
265	/	65	R	17	112T		8.0	1120	300	776	272	
265	/	65	R	17	116H	XL	8.0	1250	340	776	272	
215	/	55	R	18	95H		7.0	690	300	693	226	
225	/	40	R	18	92H	XL	8.0	630	340	637	230	
225	/	50	R	18	99H	XL	7.0	775	340	683	233	
225	/	55	R	18	98H		7.0	750	300	705	233	
225	/	60	R	18	104H	XL	6.5	900	340	727	228	
235	/	50	R	18	101H	XL	7.5	825	340	693	245	
235	/	55	R	18	100H		7.5	800	300	715	245	
235	/	60	R	18	107T	XL	7.0	975	340	739	240	
245	/	40	R	18	97H	XL	8.5	730	340	653	248	
245	/	45	R	18	100H	XL	8.0	800	340	677	243	
255	/	55	R	18	105H		8.0	925	300	737	265	
265	/	60	R	18	114T	XL	8.0	1180	340	775	272	
285	/	60	R	18	120H	XL	8.5	1400	340	799	292	
225	/	45	R	19	96H	XL	7.5	710	340	685	225	
225	/	55	R	19	99H		7.0	775	300	731	233	
235	/	45	R	19	99H	XL	8.0	775	340	695	236	
235	/	50	R	19	103H	XL	7.5	875	340	719	245	
235	/	55	R	19	105H	XL	7.5	925	340	741	245	
245	/	45	R	19	102H	XL	8.0	850	340	703	243	
245	/	50	R	19	105H	XL	7.5	925	340	729	253	
245	/	55	R	19	103H		7.5	875	300	753	253	
255	/	45	R	19	104H	XL	8.5	900	340	713	255	
255	/	50	R	19	107H	XL	8.0	975	340	739	265	
255	/	55	R	19	111H	XL	8.0	1090	340	763	265	
265	/	50	R	19	110H	XL	8.5	1060	340	749	277	
245	/	40	R	20	99H	XL	8.5	775	340	704	248	
245	/	45	R	20	103H	XL	8.0	875	340	728	243	
255	/	50	R	20	109H	XL	8.0	1030	340	764	265	
265	/	50	R	20	111H	XL	8.5	1090	340	774	277	
275	/	40	R	20	106H	XL	9.5	950	340	728	278	
275	/	45	R	20	110H	XL	9.0	1060	340	756	273	
315	/	35	R	20	110H	XL	11.0	1060	340	728	320	
205	/	55	RF	16	91H		6.5	615	300	632	214	
205	/	45	RF	17	88H	XL	7.0	560	340	616	206	
205	/	50	RF	17	93H	XL	6.5	650	340	638	214	
225	/	45	RF	17	94H	XL	7.5	670	340	634	225	
225	/	50	RF	17	98H	XL	7.0	750	340	658	233	
225	/	55	RF	17	101H	XL	7.0	825	340	680	233	
225	/	40	RF	18	92H	XL	8.0	630	340	637	230	
225	/	50	RF	18	99H	XL	7.0	775	340	683	233	
235	/	50	RF	18	101H	XL	7.5	825	340	693	245	
245	/	40	RF	18	97H	XL	8.5	730	340	653	248	
245	/	45	RF	18	100H	XL	8.0	800	340	677	243	
255	/	55	RF	18	105H		8.0	925	300	737	265	
235	/	45	RF	19	99H	XL	8.0	775	340	695	236	
235	/	50	RF	19	103H	XL	7.5	875	340	719	245	
235	/	55	RF	19	105H	XL	7.5	925	340	741	245	
245	/	45	RF	19	102H	XL	8.0	850	340	703	243	
245	/	50	RF	19	105H	XL	7.5	925	340	729	253	
255	/	50	RF	19	107H	XL	8.0	975	340	739	265	
275	/	40	RF	20	106H	XL	9.5	950	340	728	278	
315	/	35	RF	20	110H	XL	11.0	1060	340	728	320	



SnowShoes



Winter tire icy and snowy pavement Handling Braking performance

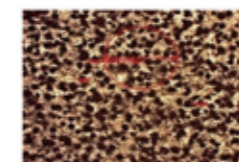
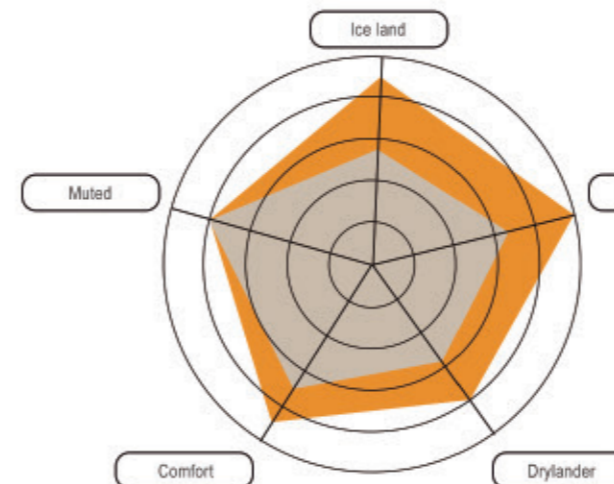
AW11 15

AW11 is a light-truck product specially designed for winter driving road, which ensures the safety of driving on ice and snow road

HABILEAD®

HABILEAD TIRE · PURSUE PERFECTION · ENJOY DRIVING

PERFORMANCE TESTING



The picture shows the micrograph under the electron microscope

Tread foaming technology: a sponge like structure with appropriate density and uniform size is formed in the tread area to absorb ice moisture



3D groove Normal groove

3D groove design: the meshing effect between grooves is formed during driving, which reduces the relative movement between pattern blocks and increases the grounding area

Design of widened driving surface:

the driving surface is 5-20mm wider than that of summer tyres, enhancing driving force and braking force

Low hardness tread formula:

normal temperature: 45-50ha, - 30 ℃: about 50ha, keep the tread soft and ensure the grip

The tread adopts two kinds of 3D ultra-thin groove densification design with reasonable angle to improve the grip of ice and snow ground and ensure the handling and driving performance of ice and snow road

The low temperature resistant compound formula of the tread can keep the soft characteristics of the tire in cold weather, effectively improve the grip of ice and snow road, and ensure excellent handling performance

The wide pattern block design of the tread chamfering angle can effectively prevent the tire from sideslip on the ice and snow road; the pattern block widening design of the shoulder of the tire and staggered fan-shaped arrangement can make the tire have more effective traction and braking ability in normal driving and turning

Deep strong pattern block and shoulder design provide excellent wear resistance and load capacity



AW11 SnowShoes

Size		PR	LI&SS	Standard Rim	Max. Load	Max. Pressure	Overall Diameter	Section Width	Notes
				inch	kg	kPa	mm	mm	
175		R 14 C	8D 99/98T	5.0	775/730	450	634	178	
175		R 14 LT	8D 99/98T	5.0	775/730	450	634	178	
185		R 14 LT	8D 102/100S	5.5	850/800	450	650	188	
185		R 14 C	8D 102/100S	5.5	850/800	450	650	188	
195	/ 70	R 15 LT	8D 99/96Q	6	775/710	450	655	201	
195	/ 70	R 15 C	8D 104/102R	6.0	900/850	450	655	201	
205	/ 70	R 15 C	8D 106/104S	6.0	950/900	450	669	209	
205	/ 70	R 15 LT	8D 106/104S	6.0	950/900	450	669	209	
LT 215	/ 70	R 15	6C 98/95T	6.5	750/690	350	683	221	
LT 215	/ 75	R 15	6C 100/97T	6.0	800/730	350	703	216	
LT 235	/ 75	R 15	6C 104/101T	6.5	900/825	350	733	235	



IceMax



Winter tire | Ice and snow pavement | Handling | Braking performance

RW501

RW501 is a winter tire product specially designed for the ice and snow area, so that you can enjoy the driving pleasure on the ice and snow ground and the slippery road

13/14/15/16/17/18/19/20

Four longitudinal grooves and continuous transverse grooves from the middle to the shoulder provide excellent snow discharge performance

Optimized tread design of shoulder and small absorption holes greatly improve the grip of ice and wet road

The 3D three-dimensional groove design with fine tread improves the grip and traction of the ice and snow ground, and improves the rigidity of the pattern block to provide excellent handling and driving performance of the ice and snow ground

Low temperature resistant compound formula of tread has strong grip on snow and ice, improves braking performance and ensures safety



RW501 IceMax

SIZE	LI/SS	XL	STANDARD RIM	MAX LOAD	MAX PRESS	OUTER DIAMETER	SECTION WIDTH	REMARKS
			inch	kg	kPa	mm	mm	
155 / 65 R 13	73T		4.5	365	300	532	157	
165 / 70 R 13	79T		5.0	437	300	562	170	
175 / 70 R 13	82T		5.0	475	300	576	177	
165 / 60 R 14	75T		5.0	387	300	554	170	
165 / 70 R 14	81T		5.0	462	300	588	170	
175 / 65 R 14	82T		5.0	475	300	584	177	
175 / 70 R 14	84T		5.0	500	300	602	177	
185 / 60 R 14	82T		5.5	475	300	578	189	
185 / 65 R 14	86T		5.5	530	300	596	189	
185 / 70 R 14	88T		5.5	560	300	616	189	
195 / 60 R 14	86T		6.0	530	300	590	201	
185 / 60 R 15	84H		5.5	500	300	603	189	
185 / 65 R 15	88H		5.5	560	300	621	189	
195 / 55 R 15	85H		6.0	515	300	595	201	
195 / 60 R 15	88H		6.0	560	300	615	201	
195 / 65 R 15	95T	XL	6.0	690	340	635	201	
205 / 65 R 15	94H		6.0	670	300	647	209	
235 / 75 R 15	109T	XL	6.5	1030	340	733	235	
195 / 60 R 16	89T		6.0	580	300	640	201	
205 / 55 R 16	91H		6.5	615	300	632	214	
205 / 60 R 16	96H	XL	6.0	710	340	652	209	
225 / 55 R 16	99H	XL	7.0	775	340	654	233	
215 / 60 R 16	99H	XL	6.5	775	340	664	221	
215 / 65 R 16	98H		6.5	750	300	686	221	
215 / 70 R 16	100T		6.5	800	300	708	221	
225 / 60 R 16	98T		6.5	750	300	676	228	
225 / 70 R 16	107T	XL	6.5	975	340	722	228	
235 / 60 R 16	100T		7.0	800	300	688	240	
235 / 70 R 16	106T		7.0	950	300	736	240	
245 / 70 R 16	107T		7.0	975	300	750	248	
215 / 50 R 17	95H	XL	7.0	690	340	648	226	
215 / 55 R 17	94H		7.0	670	300	668	226	
215 / 60 R 17	96H		6.5	710	300	690	221	
225 / 50 R 17	98H	XL	7.0	750	340	658	233	
225 / 55 R 17	101H	XL	7.0	825	340	680	233	
225 / 60 R 17	99H		6.5	775	300	702	228	
225 / 65 R 17	102T		6.5	850	300	724	228	
235 / 55 R 17	103H	XL	7.5	875	340	690	245	
235 / 65 R 17	108T	XL	7.0	1000	340	738	240	
245 / 65 R 17	111H	XL	7.0	1090	340	750	248	
215 / 55 R 18	95H		7.0	690	300	693	226	
225 / 45 R 18	91H		7.5	615	300	659	225	
225 / 55 R 18	98H		7.0	750	300	705	233	
225 / 60 R 18	104H	XL	6.5	900	340	727	228	
235 / 50 R 18	101H	XL	7.5	825	340	693	245	
235 / 55 R 18	100H		7.5	800	300	715	245	
235 / 60 R 18	107T	XL	7.0	975	340	739	240	
245 / 45 R 18	100H	XL	8.0	800	340	677	243	
245 / 60 R 18	105H		7.0	925	300	751	248	
255 / 55 R 18	105H		7.0	925	300	737	265	
265 / 60 R 18	114T	XL	8.0	1180	340	775	272	
285 / 60 R 18	120H	XL	8.5	1400	340	799	292	
245 / 55 R 19	103H		7.5	875	300	753	253	
255 / 50 R 19	107H	XL	8.0	975	340	739	265	
265 / 50 R 19	110H	XL	8.5	1060	340	749	277	
255 / 50 R 20	109H	XL	8.0	1030	340	764	265	
275 / 45 R 20	110H	XL	9.0	1060	340	756	273	
165 / 60 R 13	94/93T		4.5	670/650	450	596	167	
175 / 60 R 14	99/98T		5.0	775/730	450	634	178	
185 / 60 R 14	102/100S		5.5	850/800	450	650	188	
195 / 70 R 15	99/96Q		6	775/710	450	655	201	
205 / 70 R 15	106/104S		6.0	950/900	450	669	209	
225 / 70 R 15	106/103S		6.5	950/875	450	697	228	
215 / 70 R 15	98/95T		6.5	750/690	350	683	221	
215 / 75 R 15	100/97T		6.0	800/730	350	703	216	
235 / 75 R 15	104/101T		6.5	900/825	350	733	235	



Studdable




RW506
13/14/15/16/17/18

RW506 is designed especially for extremely cold weather. Studdable design can bring safe driving on ice road.

 Directivity studs configuration provides excellent grips and guidance, guaranteeing traction and braking

 Directional design brings efficient drainage.

 Special stud technique brings both grips and comfortable driving.

 Detailed sipes enlarge the ground contact area, draining water fast and improving grps.



RW506 Studdable

Size				LI&SS	/XL	Standard Rim	Max. Load	Max. Pressure	Overall Diameter	Section Width	Notes	
						inch	kg	kPa	mm	mm		
175	/	70	R	13	82T		5.0	475	300	576	177	
175	/	65	R	14	86T	XL	5.0	530	340	584	177	
175	/	70	R	14	88T	XL	5.0	560	340	602	177	
185	/	65	R	14	90T	XL	5.5	600	340	596	189	
185	/	70	R	14	92T	XL	5.5	630	340	616	189	
185	/	60	R	15	88T	XL	5.5	560	340	603	189	
185	/	65	R	15	92T	XL	5.5	630	340	621	189	
195	/	60	R	15	92T	XL	6.0	630	340	615	201	
195	/	65	R	15	95T	XL	6.0	690	340	635	201	
205	/	65	R	15	99T	XL	6.0	775	340	647	209	
205	/	70	R	15	100T	XL	6.0	800	340	669	209	
205	/	55	R	16	94T	XL	6.5	670	340	632	214	
205	/	60	R	16	96T	XL	6.0	710	340	652	209	
215	/	60	R	16	99T	XL	6.5	775	340	664	221	
215	/	65	R	16	102T	XL	6.5	850	340	686	221	
225	/	60	R	16	102T	XL	6.5	850	340	676	228	
215	/	55	R	17	98H	XL	7.0	750	340	668	226	
225	/	45	R	17	94H	XL	7.5	670	340	634	225	
225	/	50	R	17	98H	XL	7.0	750	340	658	233	
225	/	55	R	17	101H	XL	7.0	825	340	680	233	
235	/	55	R	17	103T	XL	7.5	875	340	690	245	
225	/	40	R	18	92H	XL	8.0	630	340	637	230	
245	/	45	R	18	100H	XL	8.0	800	340	677	243	
215	/	70	R	16	100T		6.5	800	300	708	221	
235	/	70	R	16	106T		7.0	950	300	736	240	
245	/	70	R	16	111T	XL	7.0	1090	340	750	248	
265	/	70	R	16	112T		8.0	1120	300	778	272	
225	/	65	R	17	106T	XL	6.5	950	340	724	228	
235	/	65	R	17	108T	XL	7.0	1000	340	738	240	
245	/	65	R	17	111T	XL	7.0	1090	340	750	248	
265	/	65	R	17	112T		8.0	1120	300	776	272	
235	/	60	R	18	107T	XL	7.0	975	340	739	240	
255	/	55	R	18	109T	XL	8.0	1030	340	737	265	



Winter



RW505

16/17/18

RW505 is high performance winter tyres. The asymmetrical design and excellent grips bring safe driving in winter condition.

 Continuous grooves from central to shoulder, bring excellent draining and safety.

 Asymmetrical design provide excellent grips, breaking and handling.

 Detailed 3D sipes prevent sliding, improve breaking and handling in high speed condition.

 Improved shoulder blocks bring excellent stability.



[Tread foaming technology] :

A sponge like structure with appropriate density and uniform size is formed in the tread area to absorb ice moisture.

[Design of widened driving surface] :

The driving surface is 5-20mm wider than that of summer tyres, enhancing driving force and braking force.



3D groove Normal groove

[3D groove design] :

The meshing effect between grooves is formed during driving, which reduces the relative movement between pattern blocks and increases the grounding area.

[Low hardness tread formula] :

normal temperature: 45-50ha, - 30 °C: about 50ha, keep the tread soft and ensure the grip.

RW505 Winter

Size				LI&SS	/XL	Standard Rim	Max. Load	Max. Pressure	Overall Diameter	Section Width	Notes	
			inch			kg	kPa	mm	mm			
195	/	55	R	16	87H		6.0	545	300	620	201	
205	/	55	R	16	91V		6.5	615	300	632	214	
215	/	55	R	16	97V	XL	7.0	730	340	642	226	
225	/	55	R	16	99V	XL	7.0	775	340	654	233	
205	/	45	R	17	88V	XL	7.0	560	340	616	206	
205	/	50	R	17	93V	XL	6.5	650	340	638	214	
215	/	45	R	17	91V	XL	7.0	615	340	626	213	
215	/	50	R	17	95V	XL	7.0	690	340	648	226	
215	/	55	R	17	98V	XL	7.0	750	340	668	226	
225	/	45	R	17	94V	XL	7.5	670	340	634	225	
225	/	50	R	17	98V	XL	7.0	750	340	658	233	
225	/	55	R	17	101V	XL	7.0	825	340	680	233	
235	/	45	R	17	97V	XL	8.0	730	340	644	236	
225	/	40	R	18	92V	XL	8.0	530	340	637	230	
255	/	55	R	18	109V	XL	8.0	1030	340	737	265	

